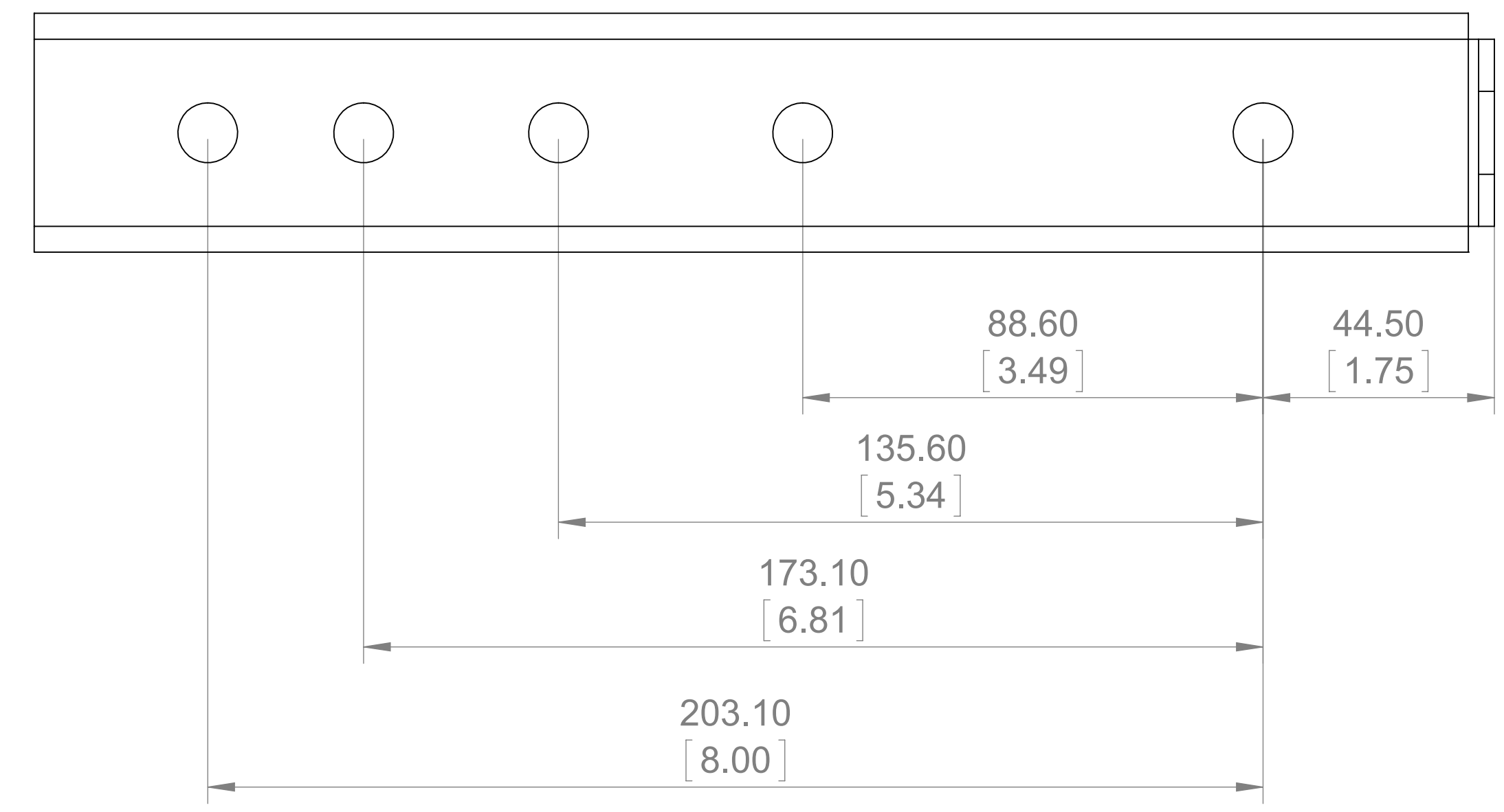
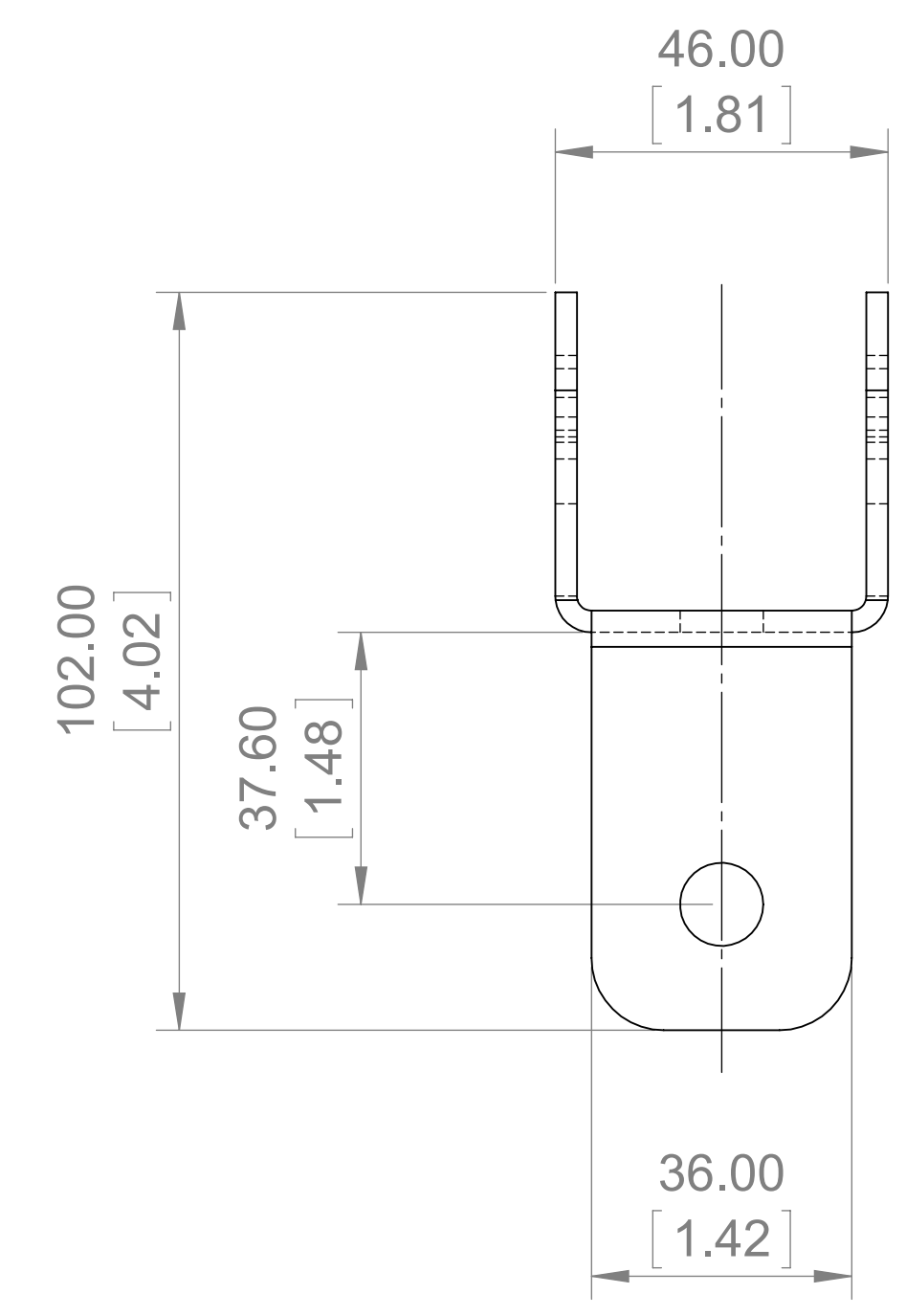
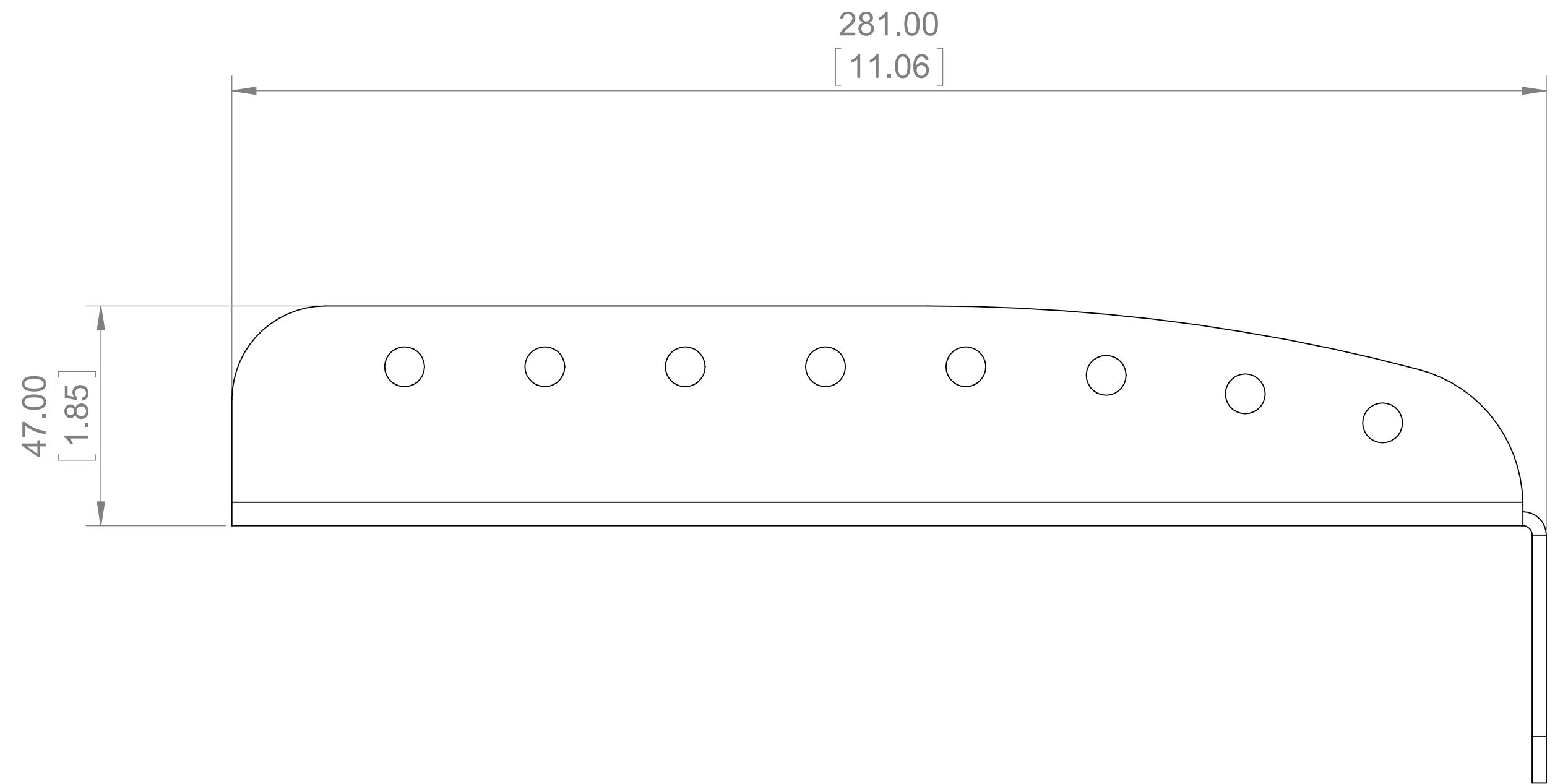


REVISION HISTORY				ZONE	BY
DATE	REV.	PREVIOUS PART NO.	DESCRIPTION		



PROPRIETARY AND CONFIDENTIAL PROPERTY OF HARMAN. DO NOT DISCLOSE, REPRODUCE, OR FURNISH WITHOUT WRITTEN HARMAN APPROVAL. ROHS RESTRICTION OF HAZARDOUS SUBSTANCES ALL MATERIALS USED IN THIS PART MUST BE ROHS COMPLIANT. SUPPLIER SHALL PROVIDE A CERTIFICATE OF ROHS COMPLIANCE WITH THE FIRST ARTICLE.	TOLERANCES UNLESS OTHERWISE SPECIFIED: XX: ± 20 X: ± 30 Z: ± 50 Angular: ± 5°	THIRD ANGLE PROJECTION 	HARMAN <small>6475 Tower B Kingdon Software Park, No. 12th Road South, High-tech Industrial Park Shenzhen 518057, CN</small>
	DRAWN BY: Cw/wh CHECKED BY: ? DESIGNED BY: ? ENGINEER: ?	DATE: 7/14/2015 DATE: 7/8/2014	TITLE: CUSTOMER DRAWING.OSB-1.SLDDRW NO: 5057837/5057893 REV: A